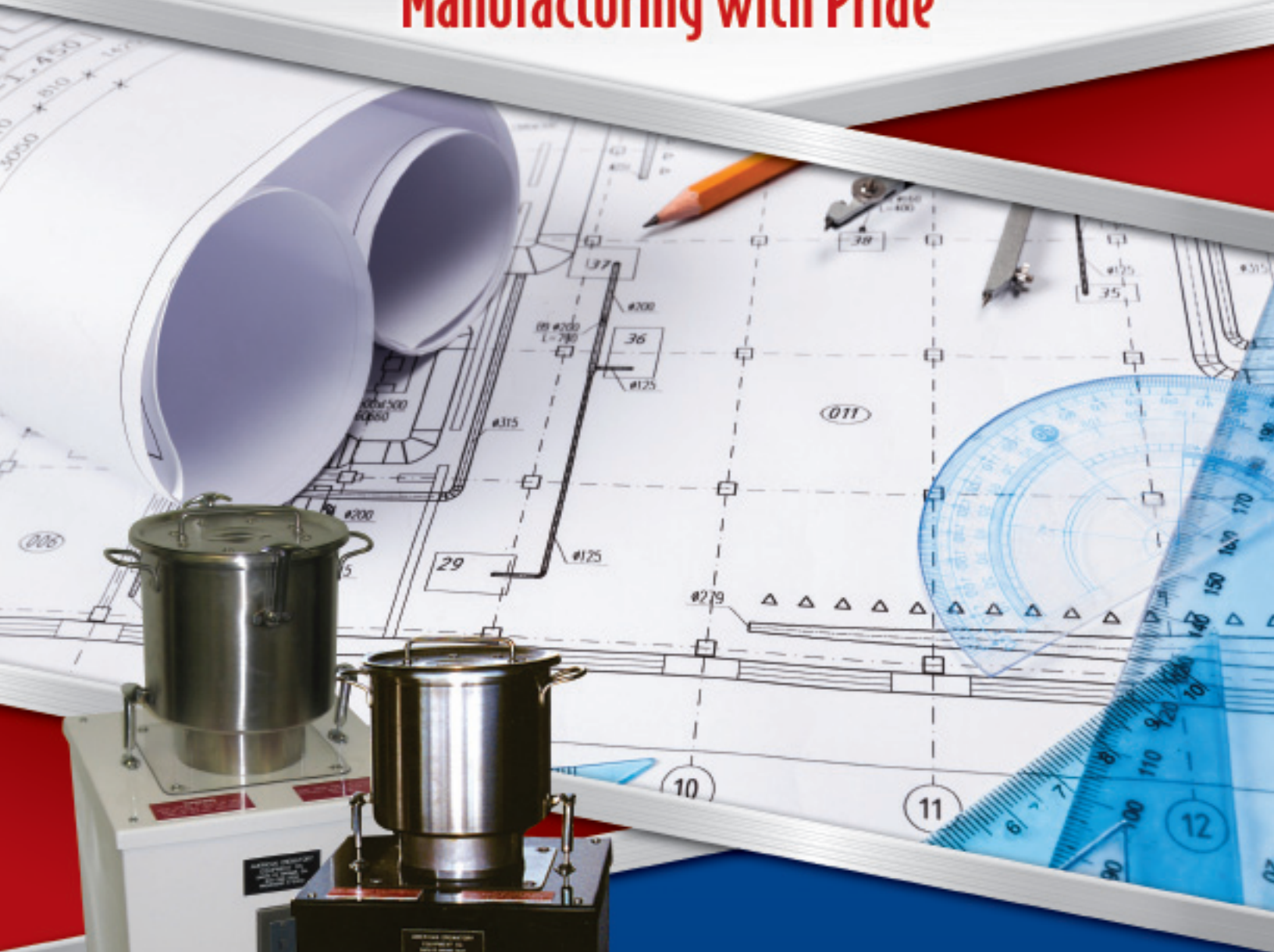


American
CREMATORY EQUIPMENT CO.
Manufacturing with Pride



Operating Manual
American A-2000
Cremated Remains Processor

Operating Manual • A-2000 Electric Cremated Remains Processor

Table of Contents

General Information	2
Operating Instructions	3
Blade & Shaft Replacement	4
Step-by-Step Visual Guide for Blade Replacement	5-6
Additional Resources	7
Replacement Parts	7
Warranty	8



General Information

- ▶ The American Electric Cremated Remains Processor is a self-contained unit and requires no installation.
- ▶ Engineered to reduce bone fragments to fit into a standard sized urn.
- ▶ Each drive unit is equipped with a 1.5 horsepower industrial rated motor with direct drive to the drum shaft and an on/off switch with overload protection.
- ▶ Two hardened swivel cutting blades pulverize bone fragments in an average time of 30 second or less.

BEFORE OPERATING YOUR PROCESSOR

Carefully check for any damage that may have occurred during time of shipment. In the event there are any damages, please file a claim with your delivering carrier within 24 Hours and notify your American Crematory Equipment Co. representative.

Operating Instructions

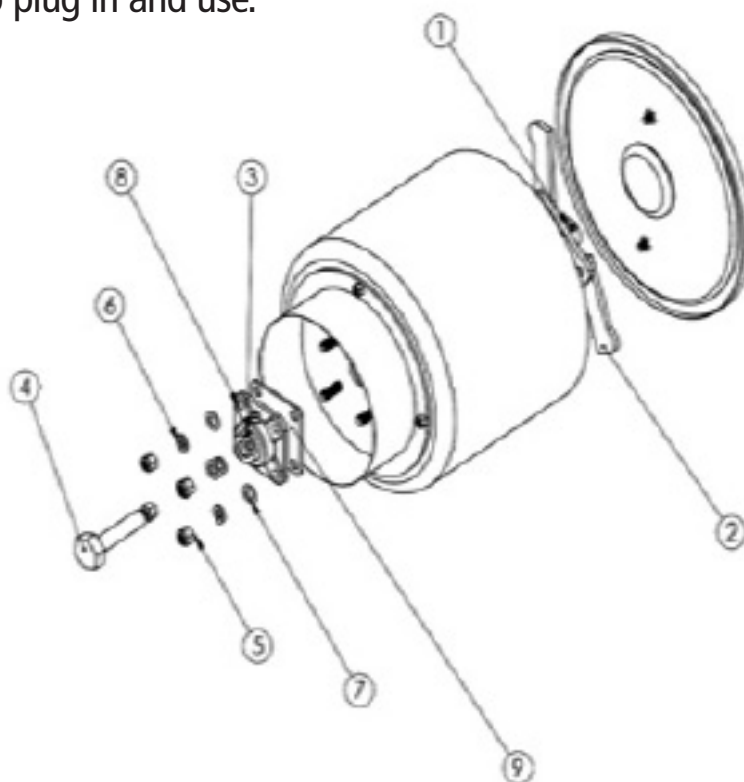
- 1 Plug into 115 volt outlet, with ground.
- 2 Attach stainless steel drum to drive unit. The drive unit has a 1.25" socket at the center on top. The drum has a 1.25" bolt at bottom. Center the drum onto the socket, the drum will sit flat on top of drive unit when socket and bolt are engaged.
- 3 Latch stainless steel drum to drive unit by lining up the two side latches. Simply pull latches upward to hook bracket mounts on each side of drum and secure drive.
- 4 Remove top lid from stainless steel drum. (The lid fits snug to drum). At the bottom of the drum are processing blades.
- 5 DO NOT PUT HANDS IN DRUM WHEN DRUM IS ATTACHED TO DRIVE UNIT OR START PROCESSOR WITHOUT LID ATTACHED. * SERIOUS INJURY CAN OCCUR**
- 6 Before processing cremations, remove all metal from cremains with a hand magnet. Failure to remove metal will damage drum.
- 7 After all metal is removed, empty cremains into drum. Attach lid to drum, ensure the lid is stuck and attach two side latches by pulling them upward to the top of the lid.
- 8 To operate the processor, simply turn the switch in the front of the base unit up to the ON position. The process will take approximately 30 seconds. Turn switch down to OFF position. Cremains are now processed. Remove drum from drive unit and remove lid. Turn drum over to pour into container.



Blade & Shaft Replacement

- ▶ Using an 1/8" Allen Wrench, loosen ① Blade Set Screw
- ▶ Once you loosen the Blade Set Screw, the blades should pull up off the shaft.
- ▶ In the event that you cannot pull the blades from the shaft, turn the pot upside down and loosen the set screws ③ Bearing Set Screw, also using an 1/8" Allen Wrench. Flip the pot back over and hit the top of the shaft, using a block of wood or center punch. The shaft should drop out of the drum, freeing the blades.
- ▶ Flip the pot back over again and replace the shaft. Push the shaft ④ against the American pot bearing ⑤ then back it off 1/8". This 1/8" space is important to avoid any rubbing. Apply a drop of Loctite® to the end of the set screws and tighten the set screws on the American pot bearing. ⑤
- ▶ Flip the pot over one last time and place American blades on to the shaft, also lifting blades up an 1/8" to avoid any rubbing. Apply Loctite® onto ① Blade Set Screw and tighten.
- ▶ The processor pot will be ready to plug in and use.

- ① Blade Set Screw
- ② American Blades
- ③ Bearing Set Screw
- ④ American Shaft
- ⑤ 3/8 Nylon Nut
- ⑥ 3/8 Lock Washer
- ⑦ 3/8 Flat Washer
- ⑧ American Pot Bearing
- ⑨ Felt Gasket



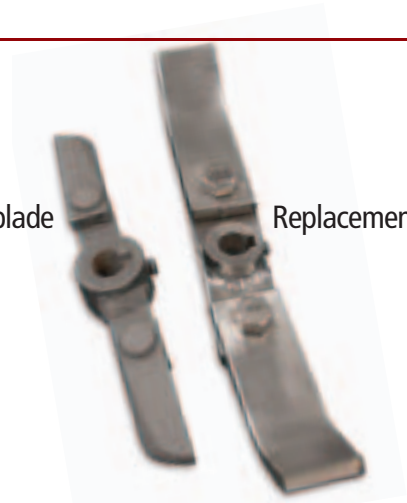
Step-by-Step Visual Guide for Blade Replacement

Recommended Tools

- A** 9/16 Ratchet
- B** 9/16 Custom Bearing Removal Tool
- C** Ball-Peen Hammer
- D** Custom Shaft Removal Tool Matthews/American
- E** 1/4 & 3/16 Inch Hex Head Key Allen Wrench

Worn out blade

Replacement blade



1. Remove set-screw with hex head allen wrench.



2. Do NOT lose 1/4 inch key way.



3. Remove worn blade.

Step-by-Step Visual Guide for Blade Replacement Continued



4. Place key way back into replacement blade.



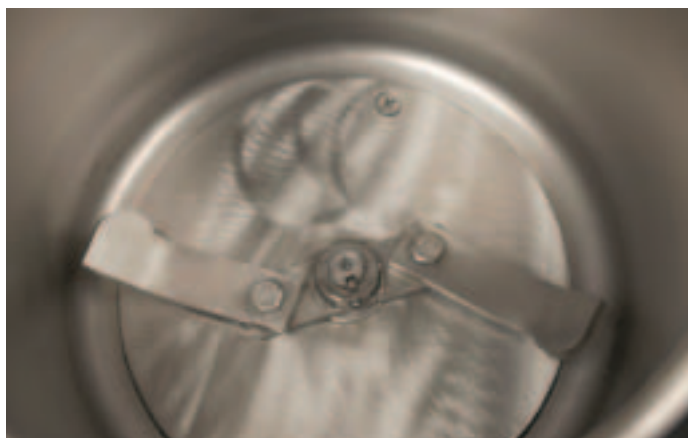
5. Slide on securely.



6. Make sure blade lays on top of washer welded to bucket.



7. Replace set-screw and tighten with allen wrench.



8. Check to see that blades spin.



9. Place bucket on unit and lock into place.

Manufacturing with Pride

Additional Resources

Visit our YouTube channel online to find troubleshooting and "how to" videos on processor blade replacement, as well as many other American Crematory Equipment Company products.

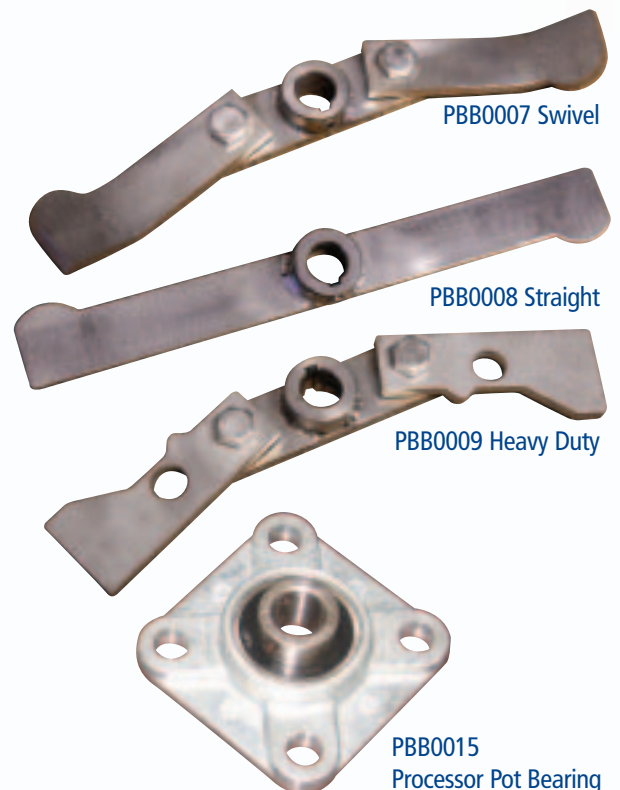


► <https://www.youtube.com/watch?v=CUq86dJDCT0>



Replacement Parts

- | | |
|---|---------|
| <input type="radio"/> American Processor Blades, Swivel | PBB0007 |
| • Swivel Blades Suggested Use: Human | |
| <input type="radio"/> American Processor Blades, Straight | PBB0008 |
| • Straight Blades Suggested Use: Pet | |
| <input type="radio"/> American Processor Blades, Heavy Duty | PBB0009 |
| <input type="radio"/> American Processor Bearings | PBB0015 |
| <input type="radio"/> American Processor Shaft | PBB0018 |
| <input type="radio"/> New Processing Drum (Pot) | PBB0001 |
| <input type="radio"/> Felt Gasket | N/A |



Warranty Agreement >>>

Baldor Motor - 6 Month Warranty
Electrical Switches - 6 Month Warranty

There is no warranty on the following components
Blades • Bearings • Drive Shaft • Processor Pot

American Crematory is not responsible for the use by owner or how it is used;
therefore, we are unable to warranty the items listed above.



~ Additional Models Available ~
Please contact us for more details or to place your order.

www.AmericanCrematory.com

14530 Anson Avenue • Santa Fe Springs, CA 90670

Corporate Office: (562) 926-2876 • (800) 396-2254 • Fax: (562) 926-2880